



MeasureSquare Mobile Edition

Training Guide for Laser Measuring

Objectives:

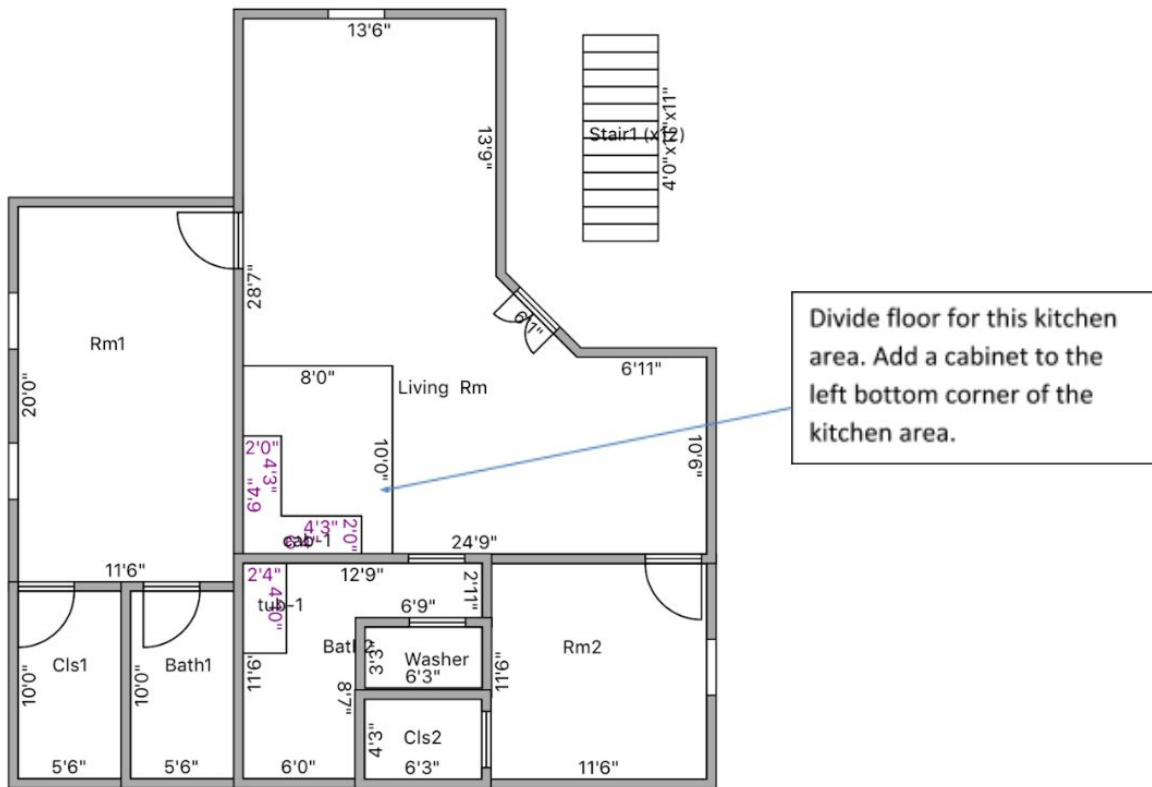
1. Measure floor plan with sketch drawing (Exercise 1: Sample Apartment)
2. Assign flooring products to rooms
3. Create seam diagram, optimize seam location and cut sheet for optimal waste
4. Create a report with a cut sheet and seam diagram (email or print)

Introduction and Overview

- Project View and Workflow Overview
- How to create a new diagram and enter project information
- Drawing Tools
- Widgets View (Opening, Rooms, Cutout, Stair)
- Products View
- Assignment View
- Pattern View
- Favorites View
- Cutsheet View

- Estimate View
- Reports View
- Share View

Exercise 1: Sample Apartment Drawing and Layout



Room Drawing/Takeoff Lesson

Key Outcomes:

Learn how to do a Room drawing via drawing tool menu options: Rectangular Room Tool, Room by Size and Freedraw

Part 1 Rectangular Room Drawing Methods for Exercise 1

Step 1

Draw Rm 1 (shown in the diagram above) Via **Room by Size Tool** create Rm1 (11'6"W x 20"L) Type in the length and width dimensions for the room and click **Done**.

Home Tools Product Estimate Reports Share

Drawing Tool

- Freedraw
- Room By Size
- Rectangular Room
- Circular Room
- Doors
- Stairs
- Cutout / Elevation
- Legend
- Instruction
- Handwriting
- Dimension Line
- Import Plan
- Set Scale
- Distance Meter

Widgets Products Assignment Pattern

Cancel Room By Size Done

Label Rm1 ⓘ

Width 11'6"

Length 20" ✕

Distance Meter >

percent is of

3 4 5 6 7 8 9

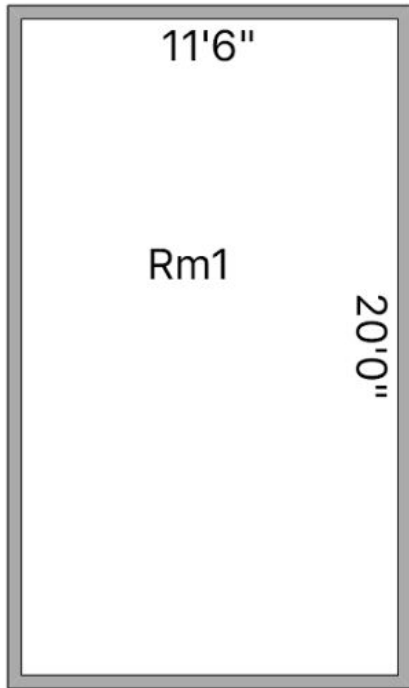
¥ \$ - & ^ * [(] { ' >

~ + ... = \ / < ; : ! ,

unc

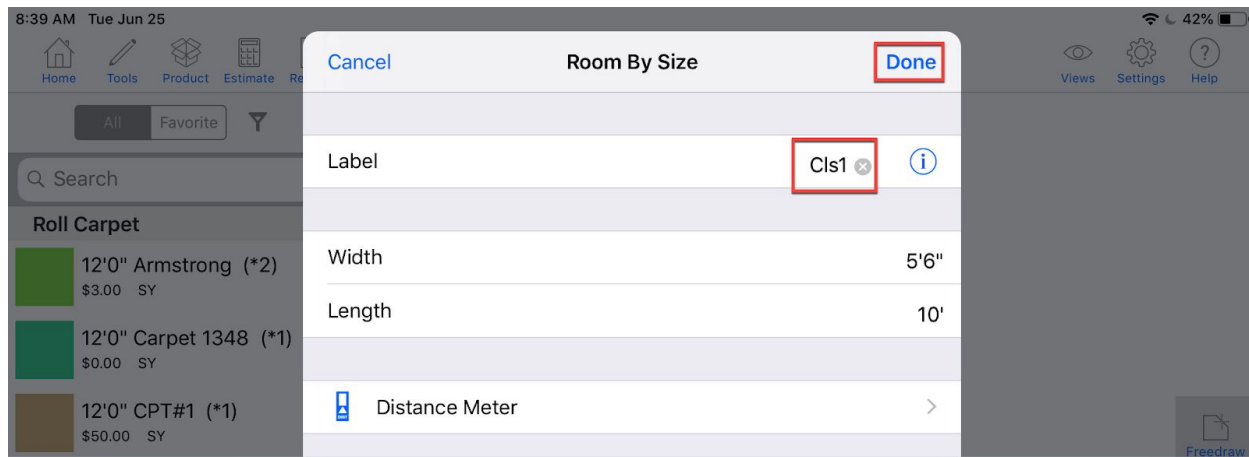
Done

Tra



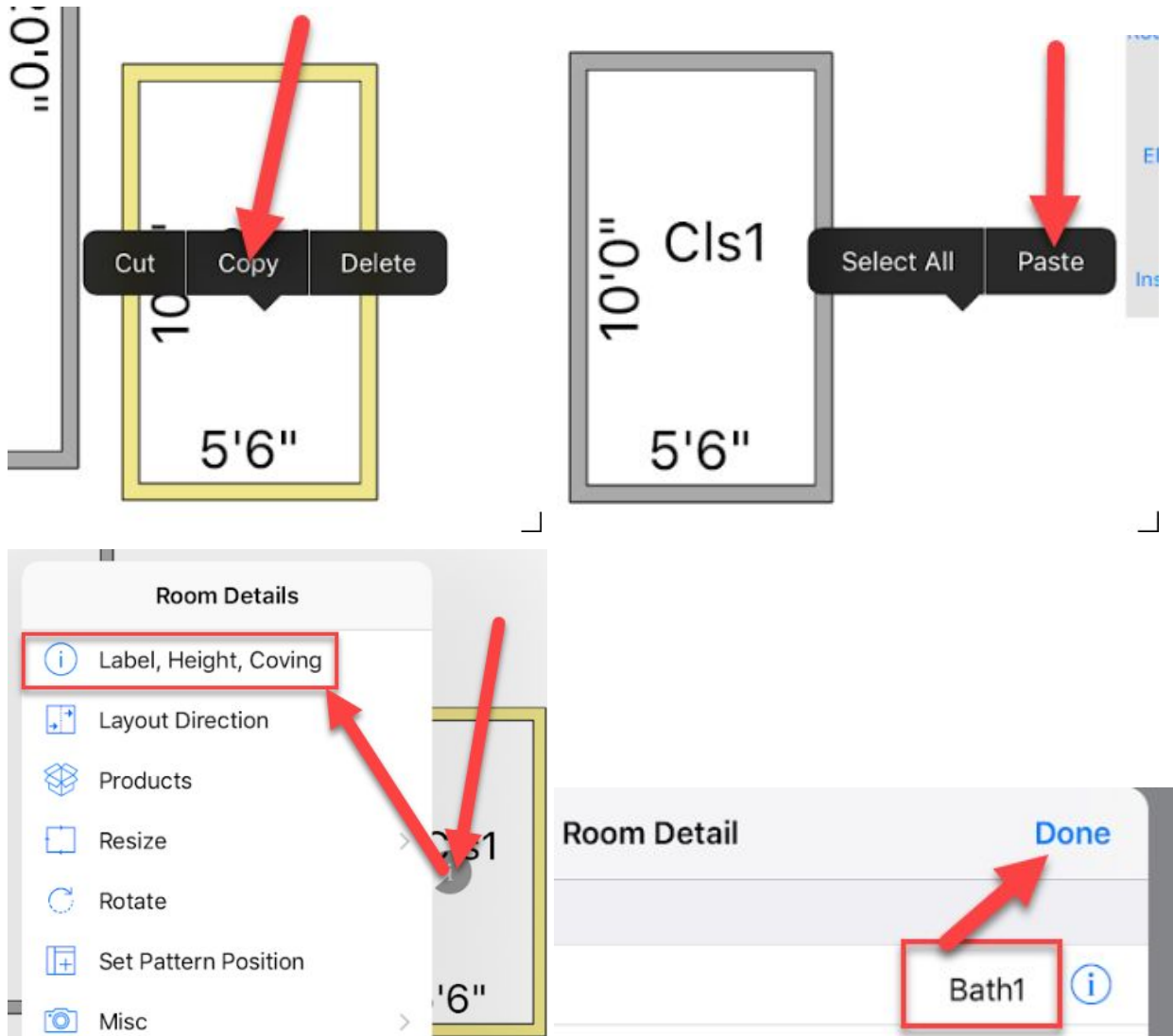
Step 2

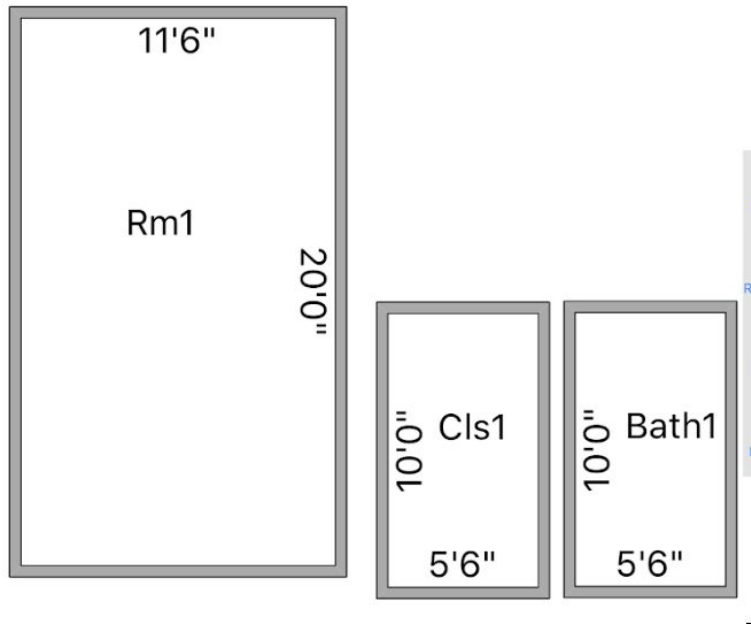
Draw **Cls1** using **Room by Size** Tool (5'6" x 10') rename room to **Cls1** using the text field and touch the **Done** button.



Step 3

Long touch on **Cls1** and **Copy** long touch on an empty area of the project and then select **Paste** to create **Bath1** then rename by tapping room to highlight it yellow, then select the **"i" icon** and select **Label**, tap in Label field and type **Bath1**





Step 4

Using **Room by Size Tool** create **Rm 2** (11'6" x 11'6") Type in the length and width dimensions for the room, type your room label and click **Done**

2:20 PM Mon May 13

Home Tools Product Estimate Reports Share

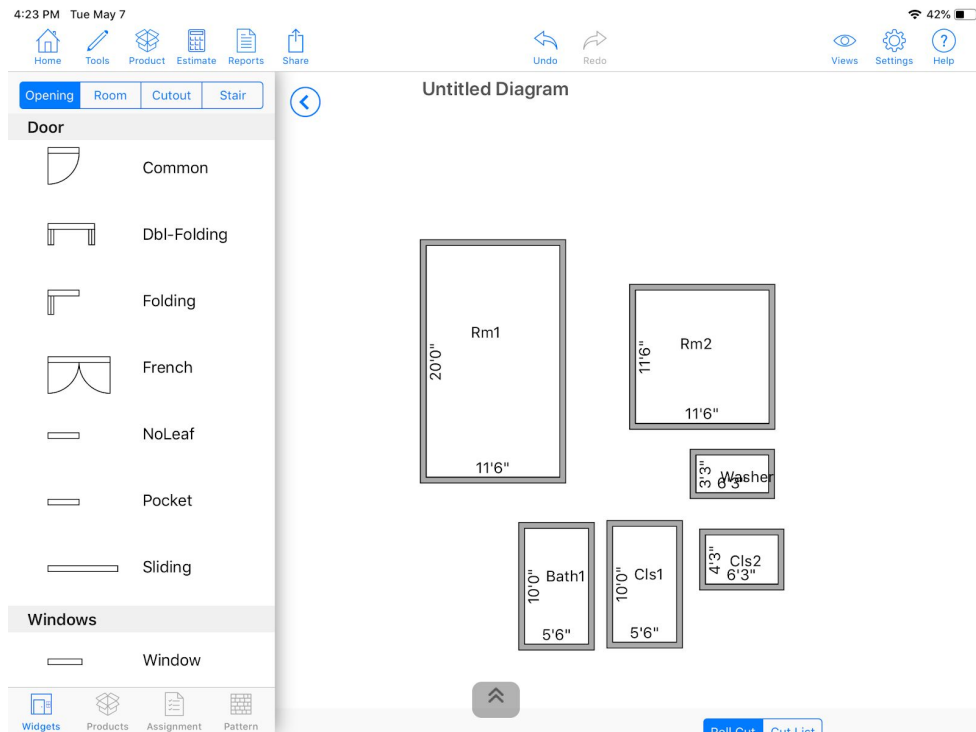
Drawing Tool

- Freedraw
- Room By Size**
- Rectangular Room
- Circular Room
- Doors

Room By Size	
Cancel	Done
Label	Rm2 ⓘ
Width	11'6"
Length	11'6"

Step 5

Draw **Washer** (6'3" x 3'3") and **Cls2** (6'3" x 4'3") using **Room by Size** tool (don't forget to rename)



Part 2 Freedraw Room Drawing Methods for Exercise 1

Step 6

Use the **Freedraw** tool to draw **Rm 3** start by tapping the screen to begin drawing from top left of room and swipe right until the first horizontal line is drawn at 12'9" (or use keypad) Continue building wall sections in a clockwise fashion swiping to build each segment as needed.

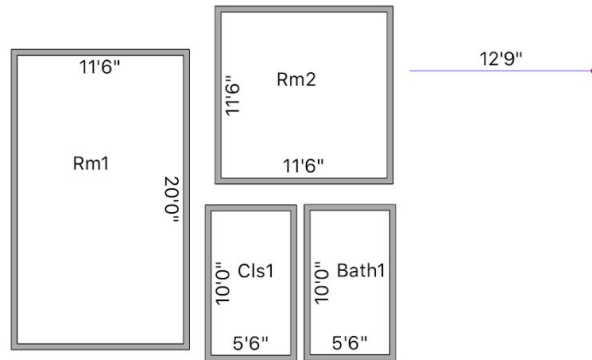
Note: you can tap the close button at the right of the toolbar to draw the last wall

2:20 PM Mon May 13

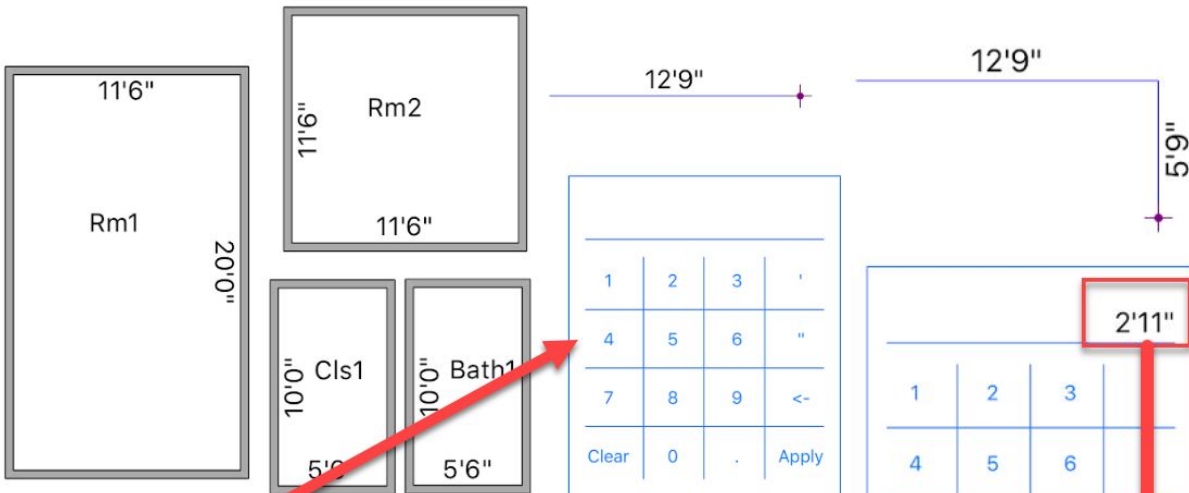
- Home
- Tools**
- Product
- Estimate
- Reports
- Share

Drawing Tool

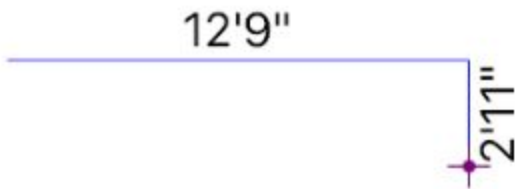
- Freedraw
- Room By Size
- Rectangular Room

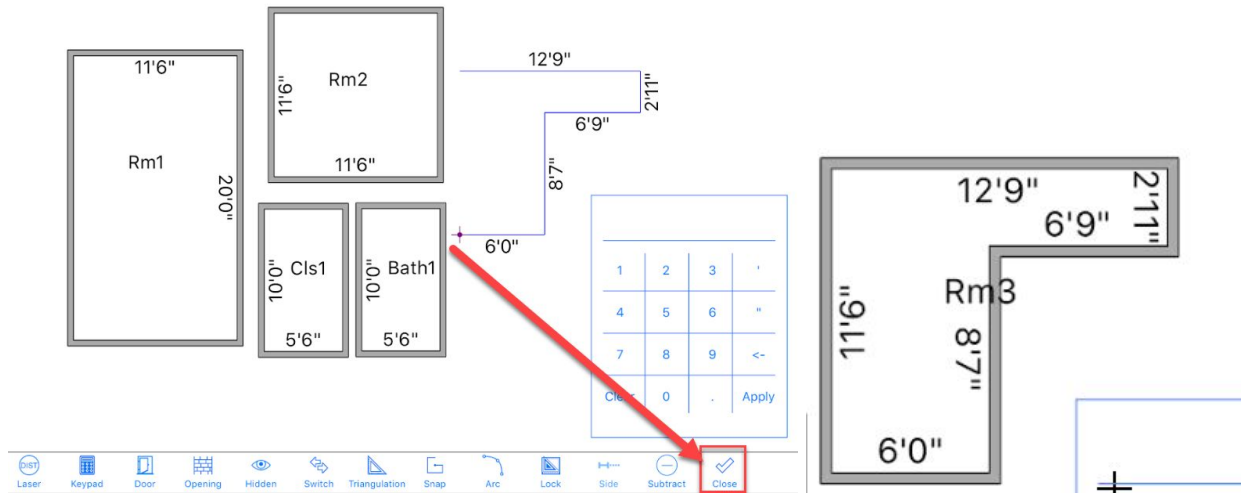


- Laser
- Keypad
- Door
- Opening
- Hidden
- Switch
- Triangulation
- Snap
- Arc
- Lock
- Side
- Subtract
- Close



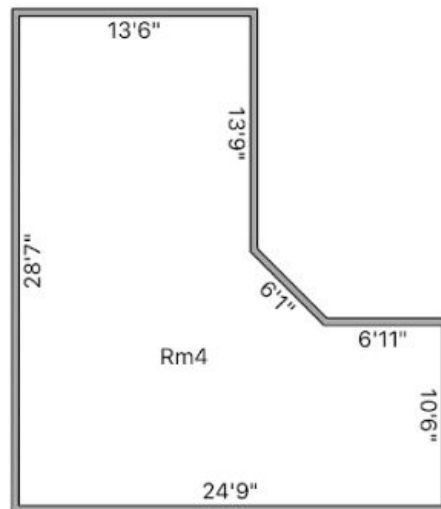
- Keypad**
- Door
- Opening
- Hidden
- Switch
- Triangulation
- Snap
- Arc
- Lock
- Side
- Subtr





Step 7

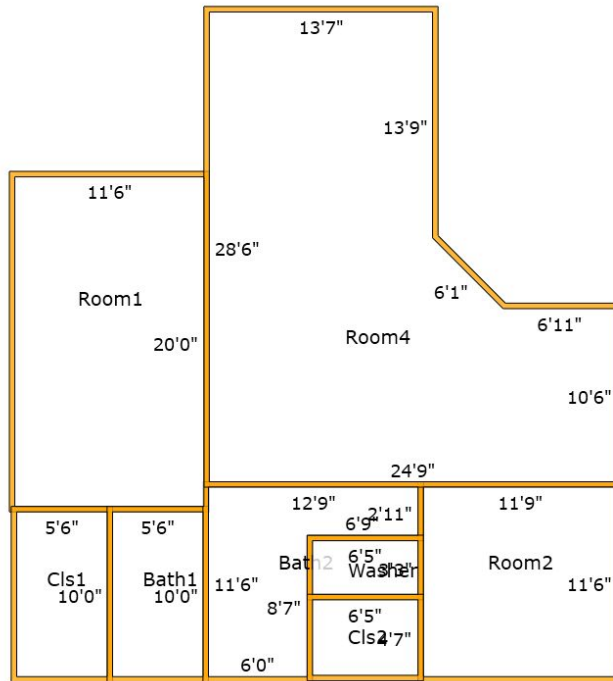
Use the **Freedraw** tool to draw the main area of the project (ask the instructor if the angled wall is not being drawn at a 45-degree angle)



Step 8

Snap the individual rooms into a floor plan by dragging to move a room to the desired location (as the room approaches the neighboring room a green dot should appear indicating the room is ready to snap to the corner of the neighboring room)

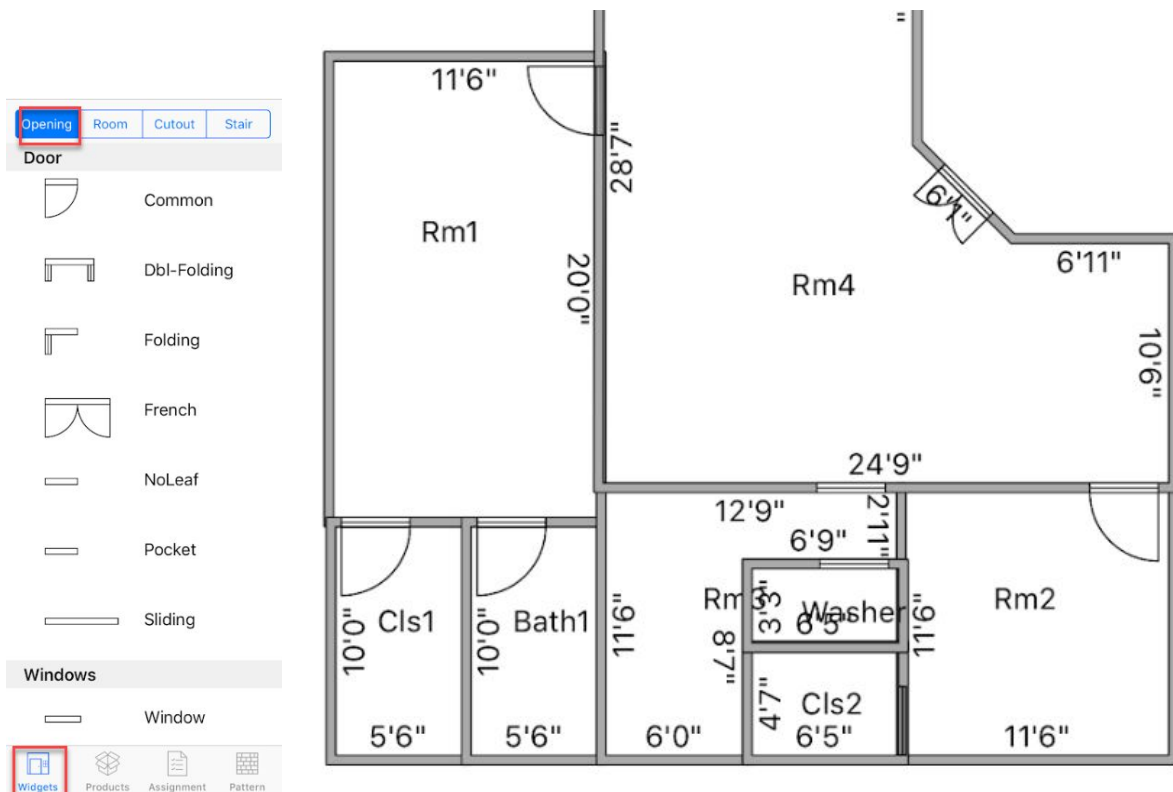
ASSEMBLED FLOOR PLAN



Modifying Rooms (Doors, Elevations, Stairs, and Dividers)

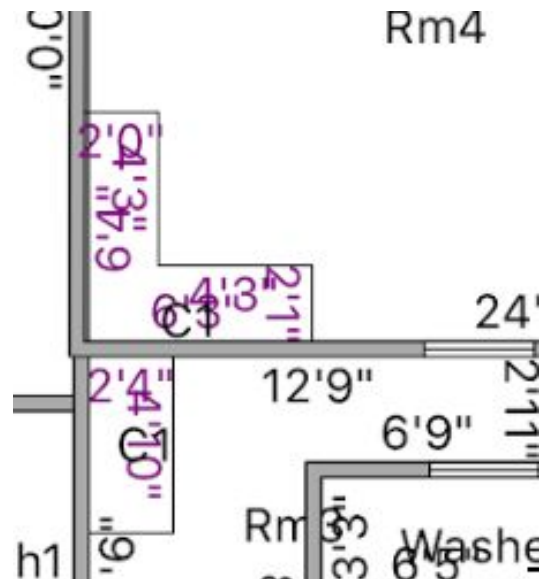
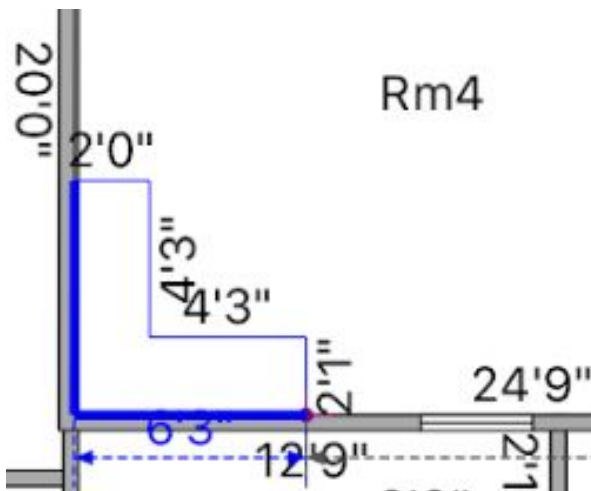
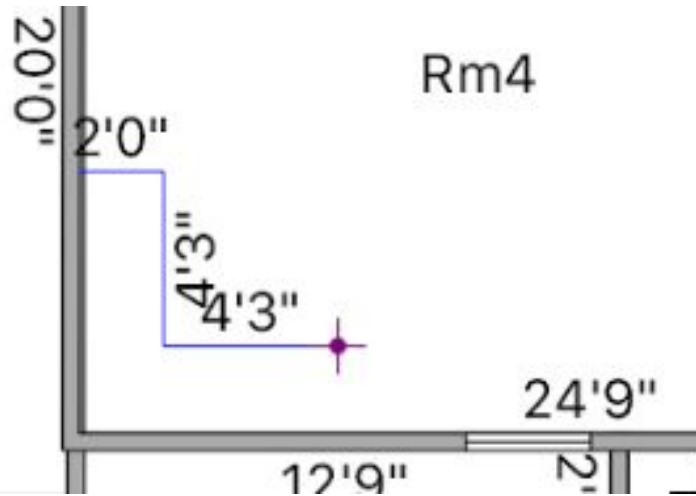
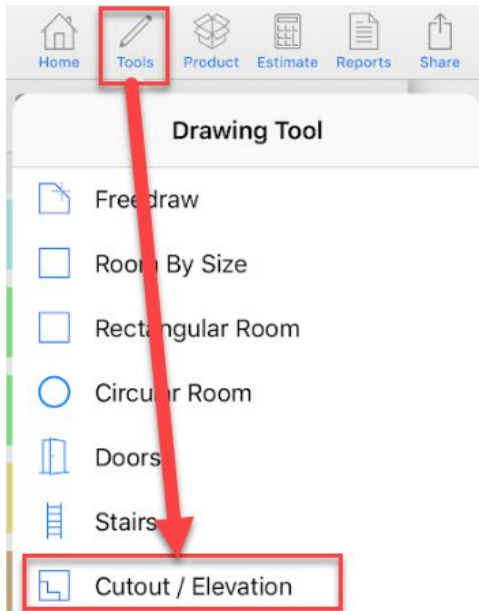
Step 9

Add doors from the widget menu by dragging and dropping



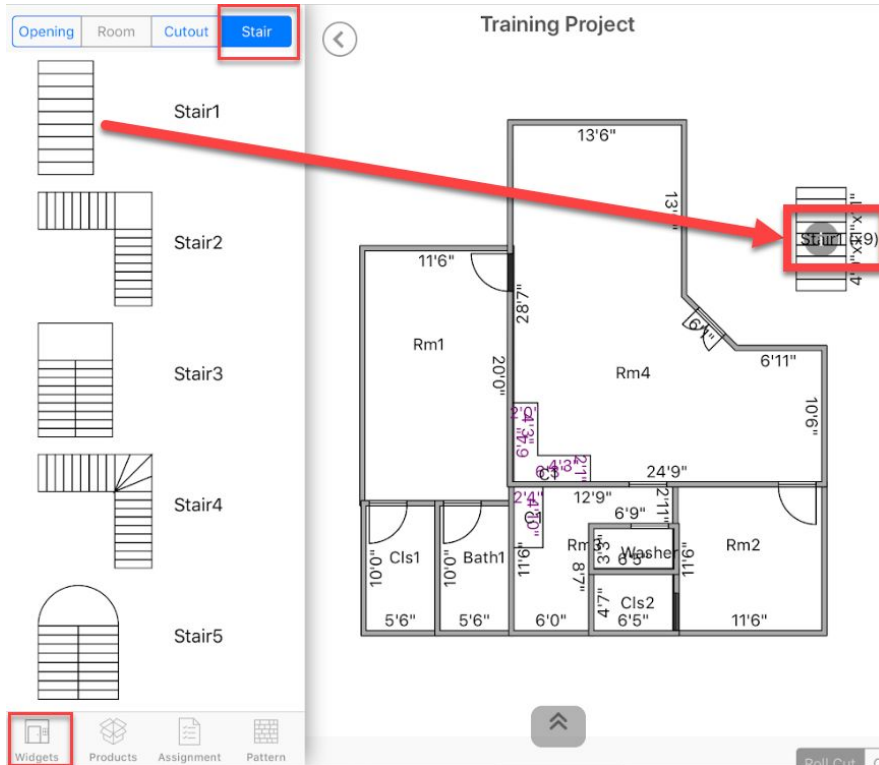
Step 10

Freedraw elevation for kitchen and bath via **Cutout/Elevation** tool using the same drawing style as freedraw room and then using the close check mark when the blue lines appear (see Exercise 1 drawing for dimensions)

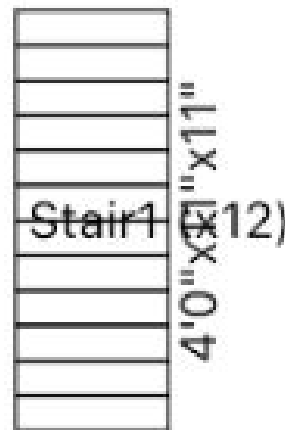


Step 11

Add a stairway from the **Widgets** view and choose **Stairs** and drag and drop the appropriate template into the project view. Then tap the **i** icon select **Details** and then type the number of steps as 12 and select **Done**

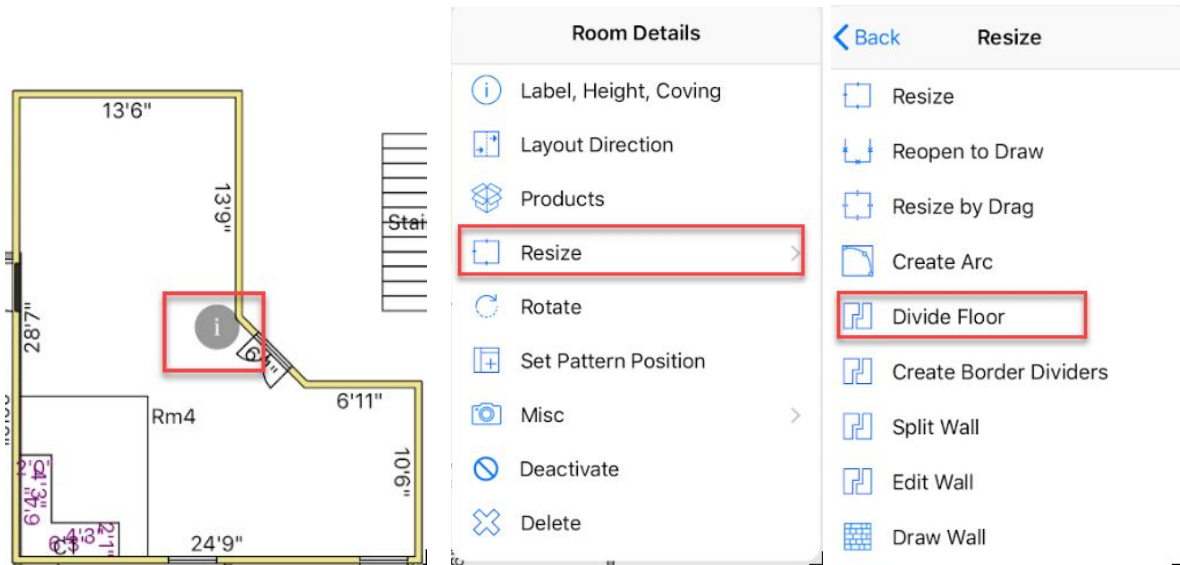


Cancel	Done
Steps	12
Stair Width	4'0" >
Tread Width	11" >
Nosing	0" >
Rise Height	11" >
Step Thickness	0" >

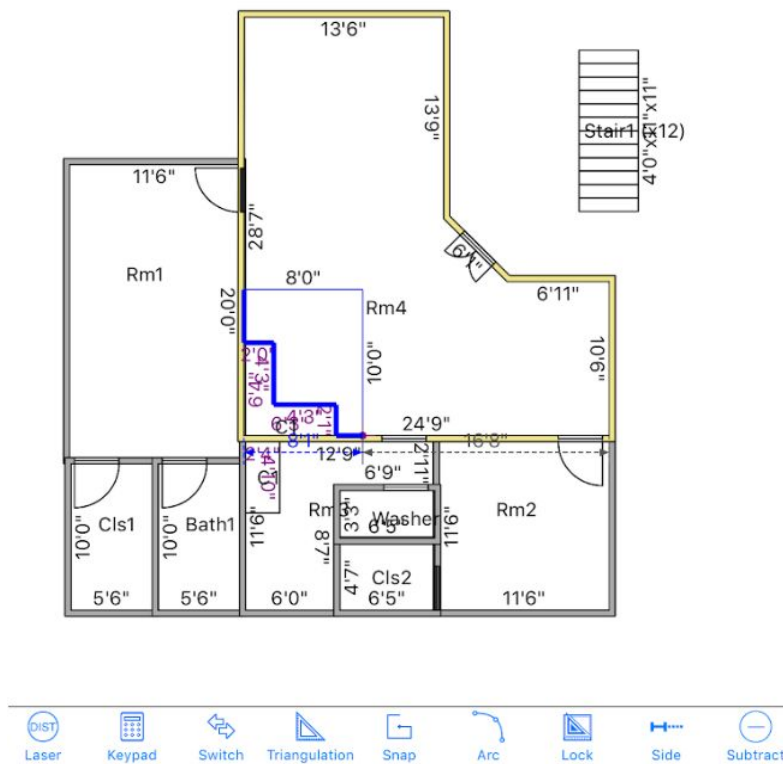


Step 12

Divide kitchen area 8x10 from the living room using **Divide Floor**, accessed by tapping on room to highlight it yellow and select the **i** icon choose **Resize** then select **Divide Floor** (see below)



Training Project



Product Creation, Application and Layout

Step 13

Create the following new products from scratch: a 12' carpet, a 12"x12" tile, and a wall base.

Note: the instructor will explain the layout of the product template, and details like roll good set up, tile waste, etc.

- (1) Assign the carpet to the bedrooms, living room, and closets.
- (2) Assign the tile to the kitchen area, washer room, and bathrooms.
- (3) Assign the wall base to all rooms.

Step 14

Roll up the cut sheet window to observe waste ratio, Linear Length, SY, etc.

Step 15

Set different layout directions (vertical/horizontal).

Step16

Move seams around and add T-seams to optimize waste and cuts. Use Optimize. Observe how the cut sheet changes. Try moving the seams and cuts on the sheet.

Step 17

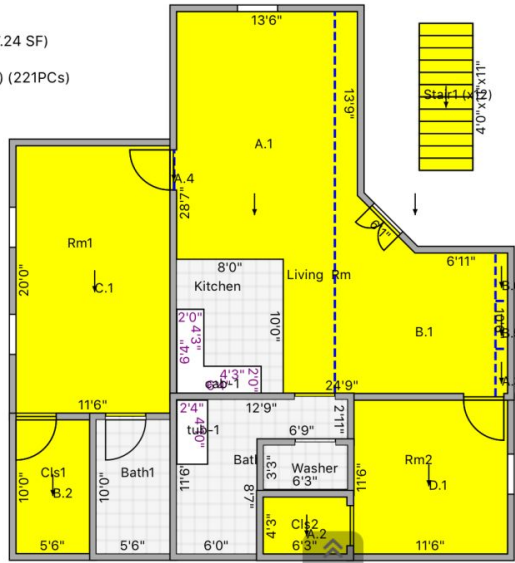
Create a new report, and then share the project file to yourself via email.

Finished Result



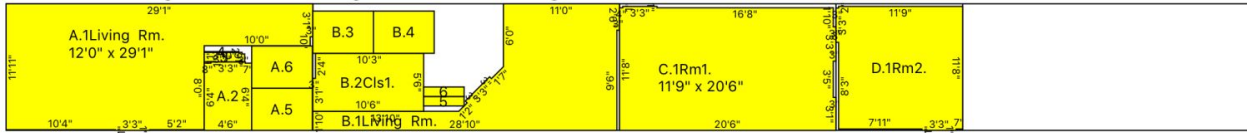
- CPT-1 12'0" 10.5% 120.80 SY (1087.24 SF)
- CT-123 5.0% 220.39 SF (24.49 SY) (221PCs)

Sample Apartment



[Roll Cut](#) [Cut List](#)

CPT-1 12'0" SY Linear Length = 12'0" x 90'7" #Roll(s) = 1 Qty = 120.80 SY (1087.24 SF) Waste = 10.5% Covered Area = 108.07 SY (972 Roll#1 Used Length = 90'7" Roll Length = 150'0" Cut Margin = 3"



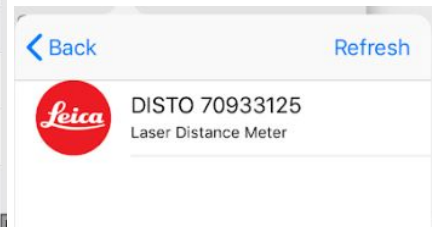
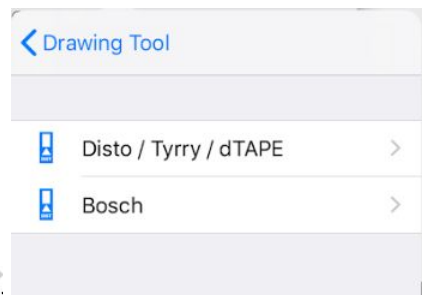
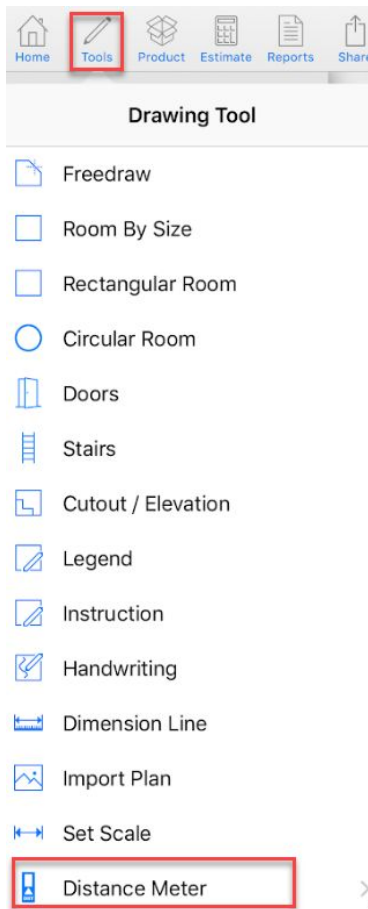
Exercise 2: Live Field Measure with Laser

Step 1

Write down your Disto or Bosch #SN (so you can find it from all devices nearby)

Step 2

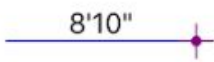
Connect to Disto via **Distance Meter** in the bottom left of **Tools** then click **Disto** or **Bosch**, once your laser shows in the list click the serial number or **Refresh** if your laser is not showing a **blue checkmark** will show to the right of the **Distance Meter** to show it has paired.





Step 3

Use laser mode from **the Freedraw** menu to begin drawing rooms. The laser icon will be a blue dot if your laser is properly connected.



Note: The key takeaway is it is the same swipe and draw approach but the laser will translate the measurement instead of using the keypad as in Exercise 1

Intro to Exercise 2

Advanced Topics to be covered in Freedraw Panel include:

- Door, Opening, Switch Start Point, angled wall via Triangulation, Subtract, and Lock

- Arc wall be covered via built in dimension line for reference and stretching to size via Set Arc in regular toolbar

Tip: measure angled wall with sub or leave till last wall and tap “close”

Step 4

Measure any elevations (sinks, cabinets) and snap to room walls or corners.

Step 5

Disconnect Disto when all rooms are completed

Product Creation and Assignment

- Create three new products in product database: 24”x24” carpet tile, wall base, and 6” vinyl plank
- Drag and drop floor products (carpet tile, and vinyl plank) into rooms
- Apply linear products (wall base to room perimeter)

Worksheet Creation

- Add additional product items from the database or from scratch
- Create additional worksheets

Printing Reports

- Sync project file to cloud
- Print report: diagram, room area list, estimate summary, cut sheet

System Settings

- Measurement system & size format (imperial/metric)
- Default door/wall size and style
- Carpet and vinyl layout settings
- Pop up entry windows and product half into door depth
- Advanced: label and dimension style

- Products catalog: add, delete, and sync product catalogs
- Sync settings: upload settings to and download settings from M2 Cloud

Additional Topics To Be Covered

- Adding a Pattern to a Room
- Add a pony wall
- Adding a tab
- Using a tab for project re-figures or using duplicate
- tag/ name a project